

What's NEW in 3Shape Implant Studio 2020.2

Version 2020.2 – October 2020



Let's change dentistry **together**

3shape

The highlights of 3Shape Implant Studio 2020.2

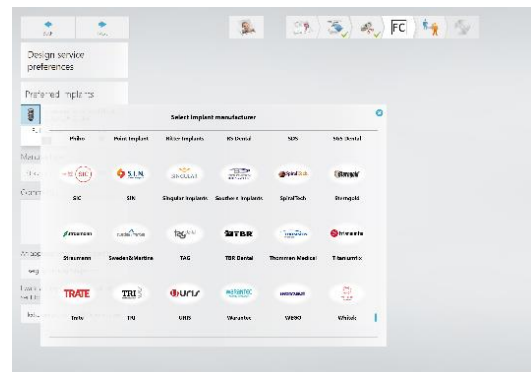
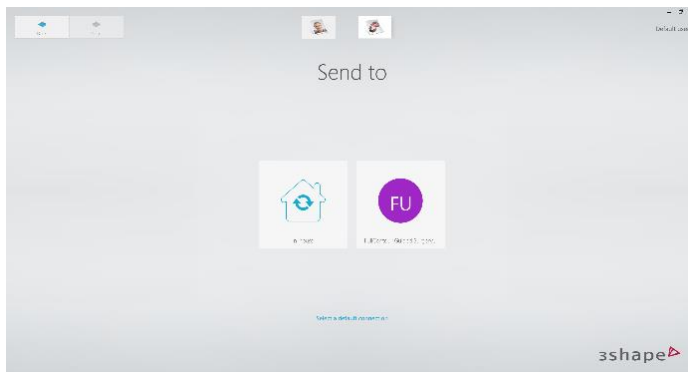
3Shape Implant Studio 2020.2 will be widely available, however, with bone-supported functionality removed from the code in areas where this does not have regulatory approval. In this way, all other features of Implant Studio 2020.1, including the hint and notification system, will be available even in these areas along with the introduction of design service integration and support for sending (CB)CT scans over communicate.

Collaboration between clinic and lab

Implant Studio 2020.2 now includes the ability to include (CB)CT data when sending cases, making the collaboration between clinics and labs easier and more flexible. It is optional to enable the sending the DICOM data, giving the choice between full flexibility and bandwidth usage.

Design Service integration

Implant Studio 2020.2 features a dedicated design service integration, making it painless to send a case for external design done by Full Contour. Implant Studio will then act as a secure platform for collecting and sending the data and choosing your preferences for the design based on the extensive number of libraries available.



The highlights of 3Shape Implant Studio 2020.1

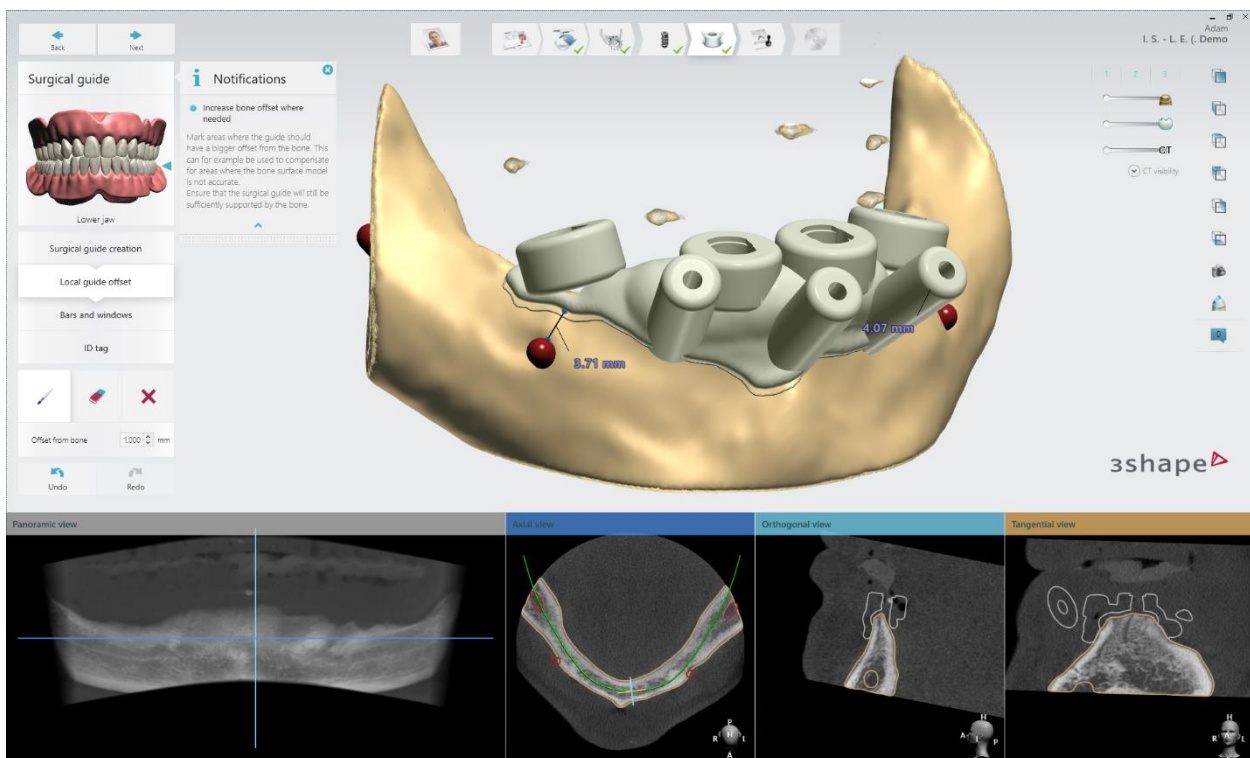
In 3Shape Implant Studio 2020.1 you can now design bone-supported guides*, which is particularly relevant for the implant specialist working with more advanced edentulous cases. Implant Studio 2020.1 also features a new notifications and hints system making Implant Studio even easier to learn for the users new to implant planning and helping the current user with tips and tricks.

Intuitive design of bone-supported guides

3Shape Implant Studio 2020.1 allows you to design bone-supported guides when no other options are viable. Our software helps the practitioner handle advanced full arch cases in an easier and potentially less invasive manner. In the bone-supported guide workflow, the CT scan is transformed into a surface model to build a surgical guide in two easy steps. The built-in warnings and safety calculations, along with the new functionality to compensate for porous ridges or recent extraction sockets, help enhance the final result.

“The bone-supported surgical guide workflow in Implant Studio is the only one of its kind that can easily be operated by clinicians.”

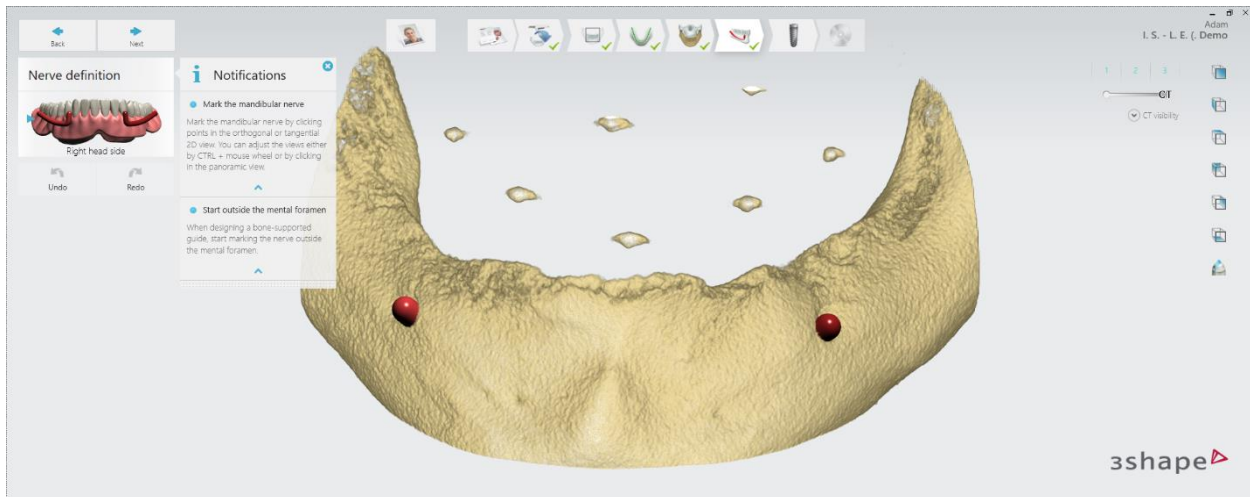
Ville Pesonen, DDS
Kuopio, Finland



*Not available in all markets. Please contact your reseller for availability of 3Shape products in your region.

Advanced algorithm for surface modelling

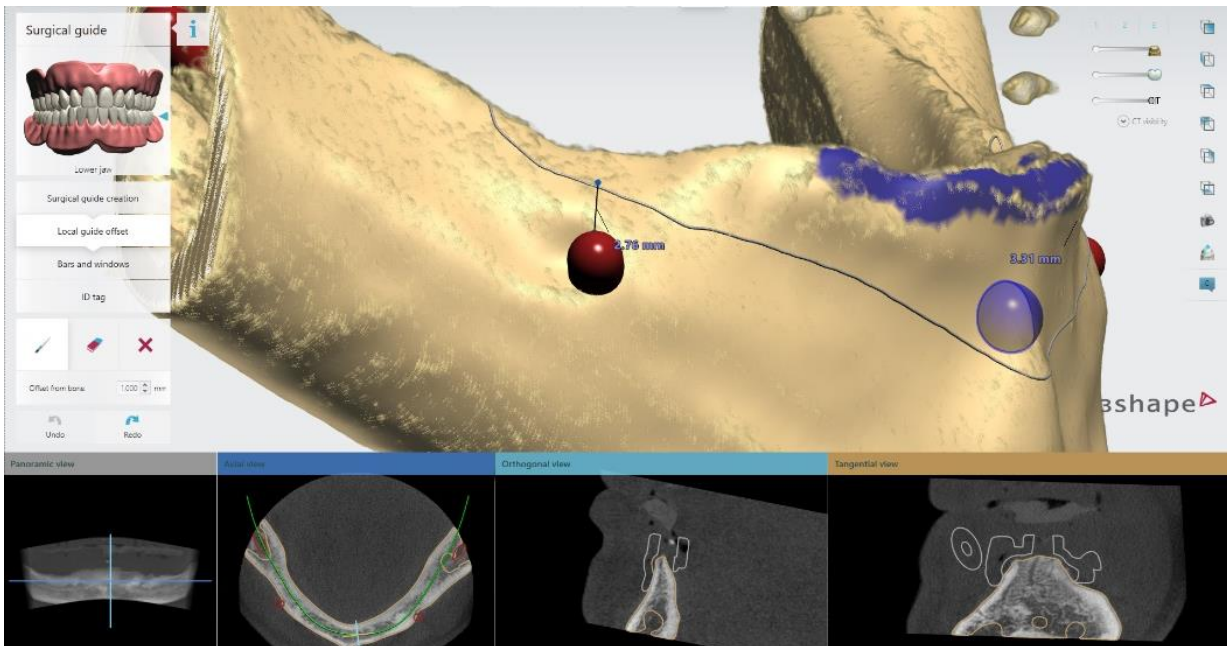
The initial surface model is defined using thresholding. However, holes in the jawbone, surface roughness and bone porosity leave the model in a poor state to be used as a basis for a good bone-supported guide. Through our hole-closing algorithm, any structural irregularities up to a certain diameter can be closed off. This leaves a smooth and stable surface to operate without compromising details such as bone protrusions in a simple step.



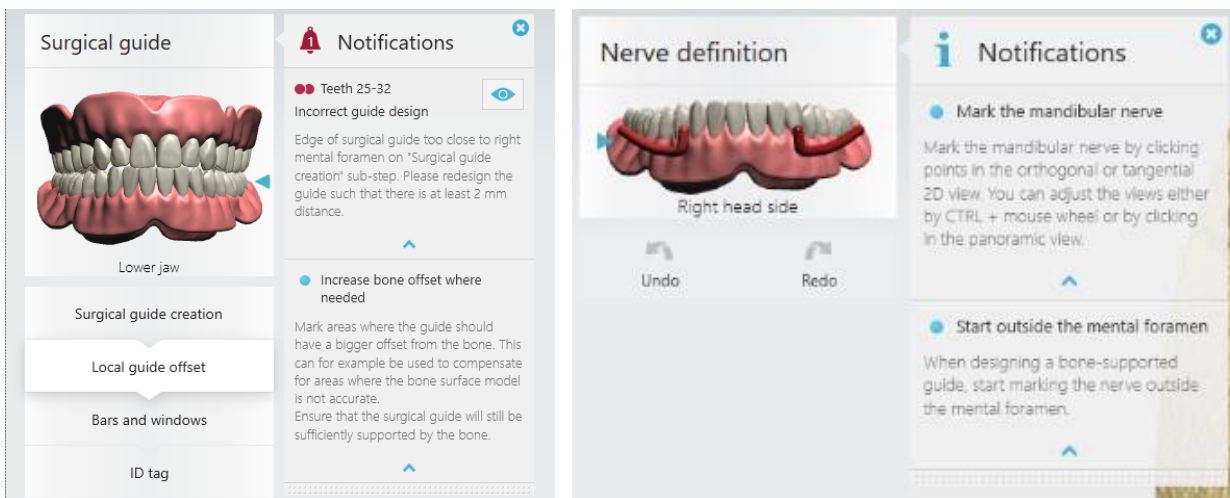
New local guide offset step

In contrast to guides based on a surface scan or an existing prosthesis, the creation of a bone-supported guide relies on surface reconstruction from limited resolution data obtained from radiological examinations. Even the best surface models based on radiological data may thus show inaccuracies or areas where it is hard to determine the exact bone level, e.g. around a porous ridge.

Implant Studio 2020.1 enables planning of areas of cortical bone to ensure an easy and stable placing of the guide. The local guide offset step allows the user to define the distinct areas where the guide should be relieved from the segmented bone surface. This may result in fewer adjustments to the patient's jaw during surgery, and a potentially faster, less invasive procedure.



New hints and notifications for easier onboarding and design help
 Implant Studio 2020.1 is equipped with a new notification and hint system, which identifies design-related issues and offers suggestions on how to solve them. In this way, the system provides new and experienced users with easy-to-follow tips on how to complete the workflow steps.



The “i” icon informs the user there is an available hint, giving useful information about the current step.



A bell informs the user that there is an issue with the design, that can either be accepted (in case of a yellow bell) or need to be corrected (in case a red bell). If there is a design issue and a hint at the same time, only the bell will be shown.



Once a hint is closed, the particular hint will not be shown again, and notifications can be disabled anytime when not needed anymore.

Uncomplicated, guided process flow

Implant Studio 2020.1 features several performance and UI enhancements. These include fewer clicks needed to apply guide-support functions and an improved algorithm for guide creation, leading to a better user experience.

***Available in select markets**

Due to regulatory approvals, this version of Implant Studio will be made available in select markets only to begin with. Please contact your reseller for availability in your market. Implant Studio (2.17.3.x) for bone-supported guides is not cleared by the FDA in the US.

Summary of new features and solved issues

Implant Studio 2020.2

- Sending of CBCT scans
- Design service integration
- Performance improvements
- Post market surveillance and feedback
- Bugfixes

Implant Studio 2020.1

Bone-supported guides

- New segmentation step of CBCT data for creating bone surface models
- Tools for better guide fit
- Local guide-offset for out of the box guide fit

Other

- Improved guide creation algorithm – faster and more precise guide creation
- Improved guide creation step – support-items and labels now generate immediately
- UI Improvements

3Shape Dental Desktop

Implant Studio 2020 is releasing on 3Shape Dental Desktop (the common platform for Implant Studio and other 3Shape software) version 1.7.5.x. Here are some of the new features relevant for Implant Studio users in this version and the previous version:

1.7.5

- Case Manager starts 50% faster
- Possibility to exclude programs for client performance

A full list of changes can be found here [\[LINK\]](#)